

Converting Kilometres and Metres

To convert between metres and kilometres.

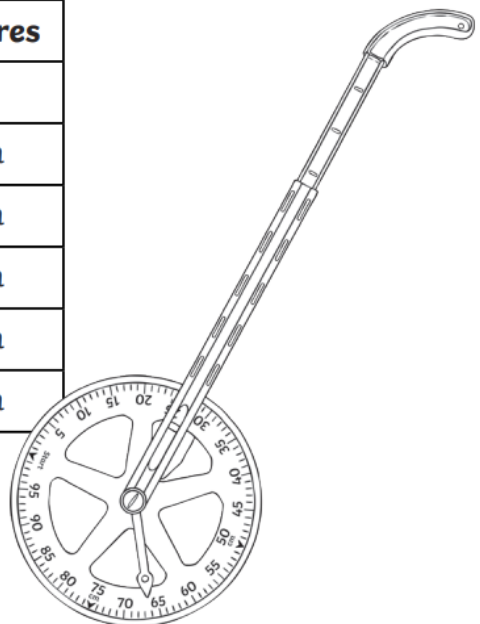


1. Complete the tables to show how many metres there are in these measurements:

Kilometres	Metres	Kilometres and Metres	Metres
3km	_____m	5km 725m	_____m
6km	_____m	3km 550m	_____m
7km	_____m	10km 675m	_____m
1km	_____m	8km 325m	_____m
10km	_____m	6km 945m	_____m
2km	_____m	5km 250m	_____m
8km	_____m	4km 585m	_____m
4km	_____m	7km 505m	_____m
9km	_____m	10km 995m	_____m
5km	_____m	11km 785m	_____m

2. Convert the metres measurements to kilometres and metres. The first one is done for you:

Metres	Kilometres and Metres
4955m	4km 955m
8695m	_____km _____m
6050m	_____km _____m
9405m	_____km _____m
11 025m	_____km _____m
10 345m	_____km _____m

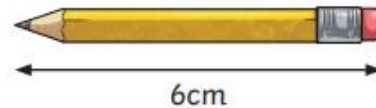
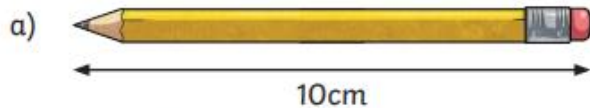


Subtract Lengths

To subtract lengths in m, cm and mm.



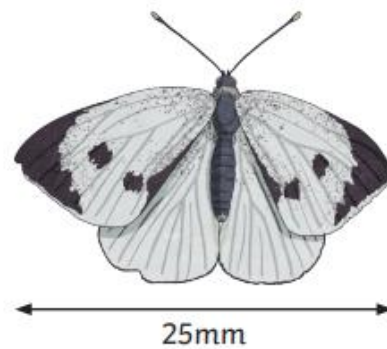
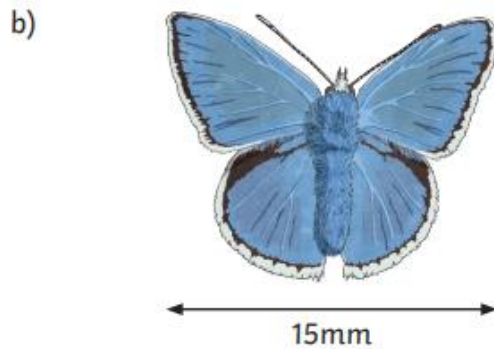
1) Complete the calculations to work out the difference between pairs of objects.



$6\text{cm} + \square \text{cm} = 10\text{cm}$

or

$10\text{cm} - 6\text{cm} = \square \text{cm}$



$15\text{mm} + \square \text{mm} = 25\text{mm}$

or

$25\text{mm} - 15\text{mm} = \square \text{mm}$

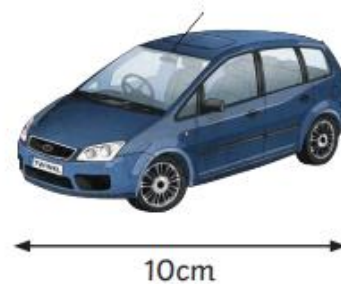
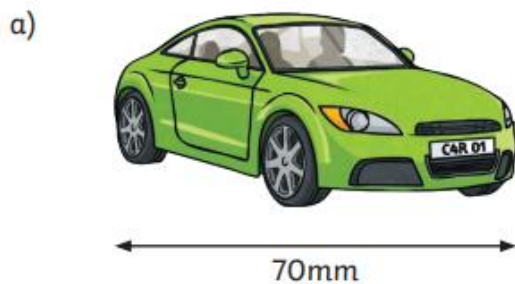
2) Work out the difference between the pairs of objects.

First, make sure both measurements are in the same unit. An example has been completed.

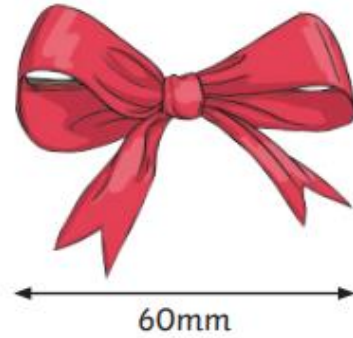
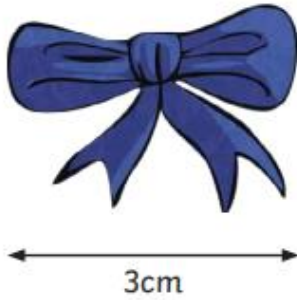
$40\text{mm} = 4\text{cm}$

$4\text{cm} + 2\text{cm} = 6\text{cm}$

or $6\text{cm} - 4\text{cm} = 2\text{cm}$



b)





2m 80cm



120cm



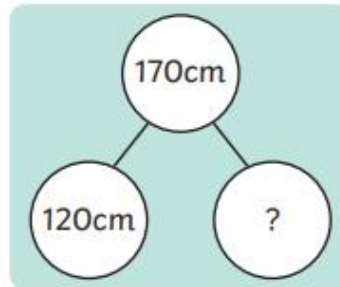
2m 60cm



1m 70cm

Example: What is the difference in length between the sheep and the dog?

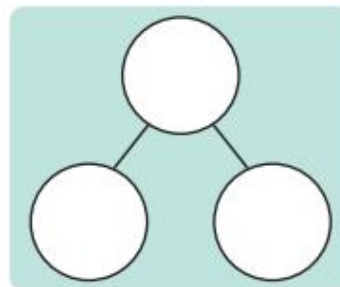
170cm	
120cm	?



	H	T	O
	1	7	0
-	1	2	0
	0	5	0

3) Calculate the difference. Complete the models and the calculation.

a) Crocodile and sheep



	H	T	O
-			

Difference =