A close-up photograph of a hand holding a glass prism. The prism is positioned to refract light, creating a vibrant rainbow spectrum of colors (red, orange, yellow, green, blue, purple) that is visible through the prism. The background is softly blurred, showing what appears to be a window with blinds. A large, semi-transparent reddish-brown shape overlaps the right side of the image, containing the text.

# Science Summer HW and Flip

## FLIP

Please watch the following two videos. You will be asked questions based on these clips in class In Shaa Allah.

Warning: These videos contain background music. You can mute them and read the subtitles.

<https://www.youtube.com/watch?v=d7yTlp4gBTI>

<https://www.youtube.com/watch?v=IOIGOT88Aqc>

## Practical Activity

Explore what the sun and sky looks like during **Fajr/Zuhr/Asr/Magrib/Esha and Witr** time. Is it light outside? Is it dark? Are there any shadows on the ground?

---

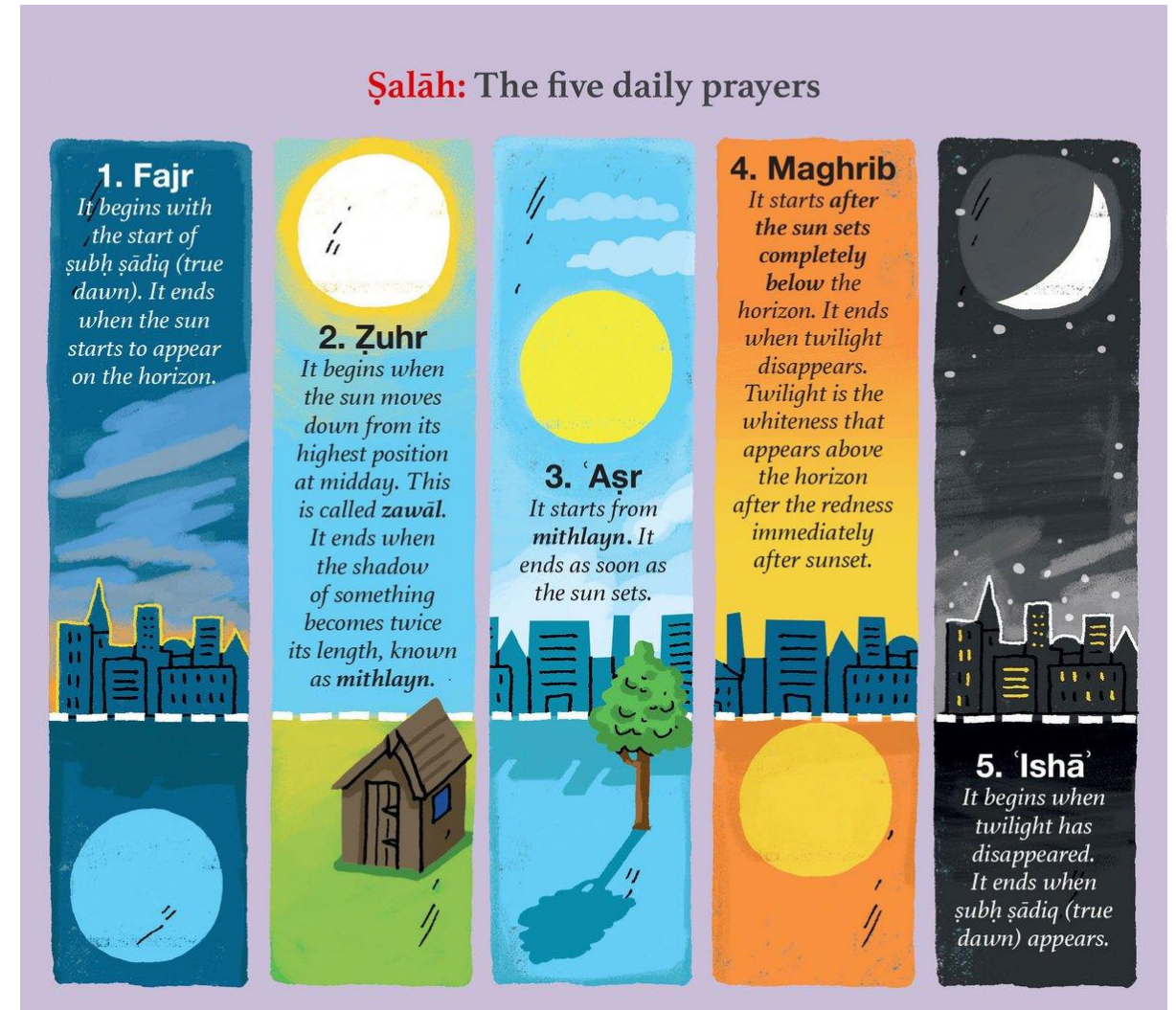
Go outside during the day and stand still. Look at your shadow on the ground. Is it short? Is it long? Is it there? Is it not? Is your shadow the only thing you see?





# Science HW

Create a poster on the timings of Salah. Have a look at some examples to give you an idea.





# The Five Prayer Times

The five daily prayers are performed at times determined by the position of the sun in the sky and vary at different locations.



**Fajr:**  
Dawn,  
before sunrise



**Zuhr:**  
Midday, after the sun  
passes its highest



**Asr:**  
The late part of  
the afternoon



**Maghrib:**  
Just after sunset



**Isha:**  
Between sunset  
and midnight

Verily, the prayer is enjoined on the believers at fixed hours - Quran 4:103