



English Homework






Designing leaflet

Word of the week: Climate



Climate Menu

- Climate is the average pattern of all the parts of weather we have just explored, recorded in each part of the world during a certain time period.
- Here are some examples of different world climates:

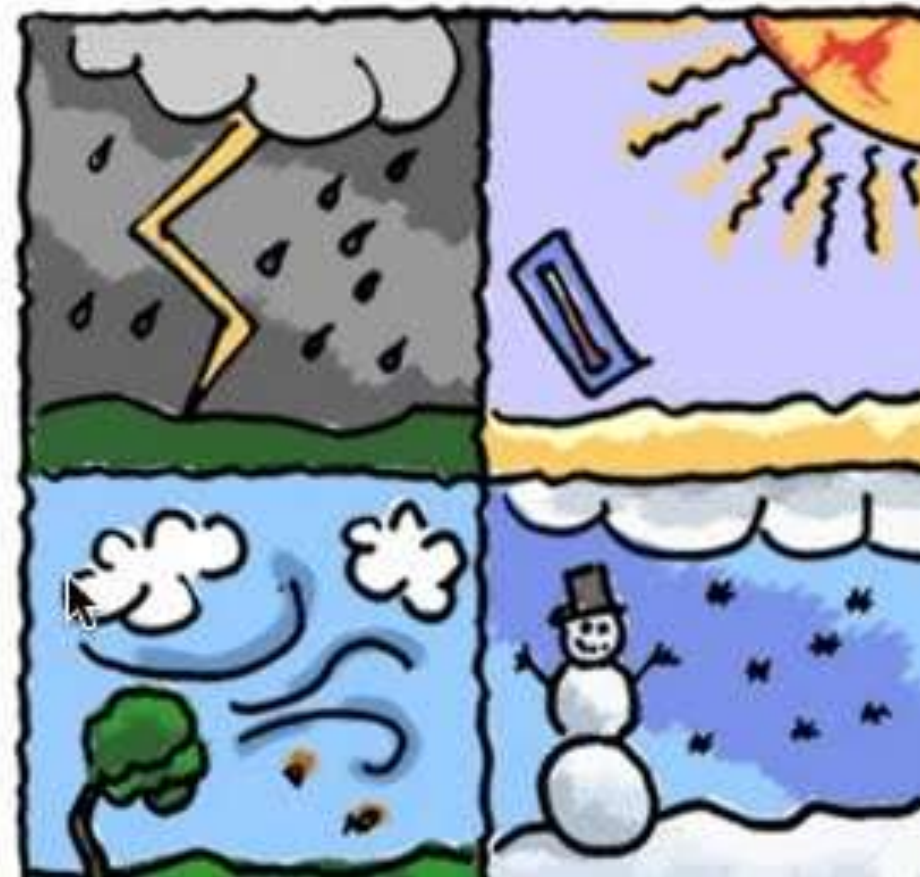
Tundra	Grasslands	Rainforest	Desert	Alpine
				

- *It's a noun.*
- *Copy this page in your homework book.*
- *Make your own sentences using the word sustainability.*
- *Impress your teacher and parents with your new word knowledge.*
- *See if you can slip this word into your conversations, or your writing this week.*

What's the difference between weather and climate?

Weather is what the forecasters on the TV news predict each day. They tell people about the temperature, cloudiness, humidity, and whether a storm is likely in the next few days. That's weather! It is the mix of events that happens each day in our atmosphere. Weather is not the same everywhere. It may be hot and sunny in one part of the world, but freezing and snowy in another.

Climate is the average weather in a place over many years. While the weather can change in just a few hours, climate takes hundreds, thousands, even millions of years to change.



Spellings

- Write the spellings down 5 times and then using a dictionary, write the meaning down of each word.
- SPELLING TEST WILL BE ON FRIDAY

<i>climate</i>	<i>measurement</i>	<i>average</i>
<i>season</i>	<i>temperature</i>	<i>define</i>
<i>rainfall</i>	<i>region</i>	<i>monthly</i>
<i>described</i>	<i>cloudiness</i>	<i>Quadrilateral</i>

What is a leaflet?

A leaflet is usually a piece of paper (sometimes folded) that contains information, images and advertising about something specific.



What else can I recycle?

Garden Waste

Collected fortnightly by your local district or borough subscription service – details on your local council's website.

Garden waste can also be recycled at our household waste recycling sites or composted at home.

How about purchasing one of our great value home composting bins?

Getcomposting.com



Household waste recycling sites (tips)

Up to 30 different materials can be taken to our 10 household waste recycling sites.

Charges apply for soil, hardcore, tyres, plasterboard and asbestos.

All the details of our sites and what they can accept can be found at:

eastsussex.gov.uk/recyclingsites



recycle your electricals

Everything with a plug, battery or cable can be recycled.

If you live in the Rother, Wealden or Hastings council areas, you can now recycle your small electricals with kerbside collection from your home. Please place small electrical items in a small carrier bag and place it on top of either your green or black bin on collection day.

Always place batteries in a separate bag and never place these types of items in your bin.

For all other areas, please search recycleyourelectricals.org.uk to find your local recycling point for electricals and batteries.



Remember to put the bin out!

Put your bins out on the correct day where they can be clearly seen and easily collected.



Thanks for recycling!

What can go in your Recycling Bin?

* All items clean, dry and loose please.



Yes please



- Glass bottles
- Glass jars
- Cardboard
- Paper
- Shredded paper (in clear bags)
- Food tins
- Drink cans
- Aluminium foil

- Aerosol cans (empty)
- Plastic bottles (squash and put lids back on)
- Plastic pots, tubs and trays
- Plastic bags and films
- Plastic packaging



No thanks

- Electrical items and batteries
- Black plastic bags
- Food waste
- Textiles
- Food/drinks cartons
- Pyrex/ovenproof glassware
- Drinking glasses
- Crockery
- Window panes

- Mirrors
- Light bulbs
- Garden waste
- Polystyrene/bubblewrap
- Hard plastics e.g. toys and plant pots
- Foil-lined plastic pouches and bags e.g. crisp packets
- Household refuse



Help us to recycle even more



Writing Prompt



We will now write two – three paragraphs of our leaflets.

These paragraphs will be about **RUBBISH!**

"Recently, there has been an increase in the amount of litter dropped on the pathways through the trees. How terrible! If this continues, there will be more rubbish than leaves on the ground. We want a lush, green woodland brimming with wildlife, not plastic and tin cans. What can be done about it? The answer is obvious, throw your rubbish in the bin!"



