

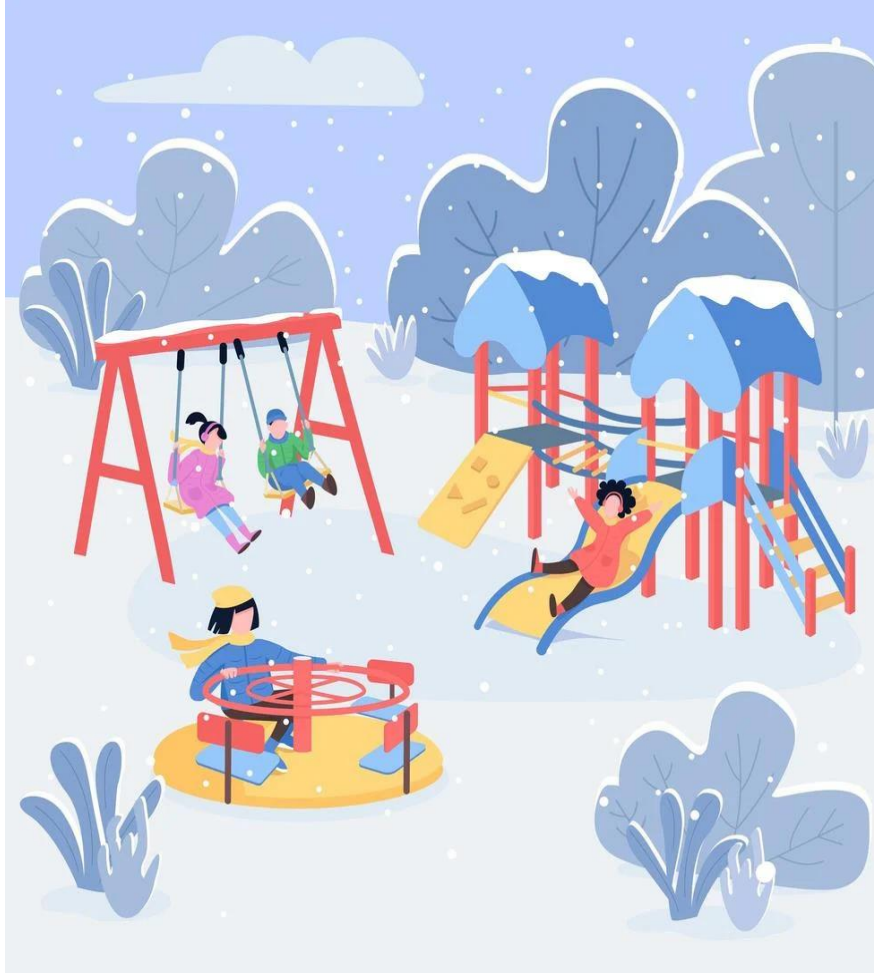
English Homework – Yrs. 3&4 – Spring 1 – Week 1

Reminder: Prepositions

A preposition is a word or group of words used before a noun, pronoun, or noun phrase to show direction, time, place, location, or to introduce an object.

Reminder: Rules of Dialogue

“CL Blah Blah P” Who? How? NS/NL



Explore this winter scene of a playground and think about the actions, behaviours, emotions, feelings, and conversations that may be taking place as the children play.

Using your knowledge of prepositions, write a letter to Nana (Grand Mother) describing the scene, use lots of adjectives and details. Nana does not know the layout of the playground, or how Winter had affected the area, she also doesn't know the children of what they look like, so you will need to paint a picture with your words for her so she can visualise in her mind this exact scene.

For the two children playing on the swings, add some dialogue, think about what they would be talking about, discussing, or chit-chatting about as they pay each other backwards and forwards on their swings.

Year 3 Expectation: Use at least two adjectives, four prepositions and two lines of dialogue

Year 4 Expectation: Use at least six adjectives, four prepositions and six lines of dialogue

Your writing does not have a word limit, so be as detailed as possible, don't think about how much you need to write, review your work to make sure you've been as descriptive, expressive and accurate as possible, also don't forget punctuation.