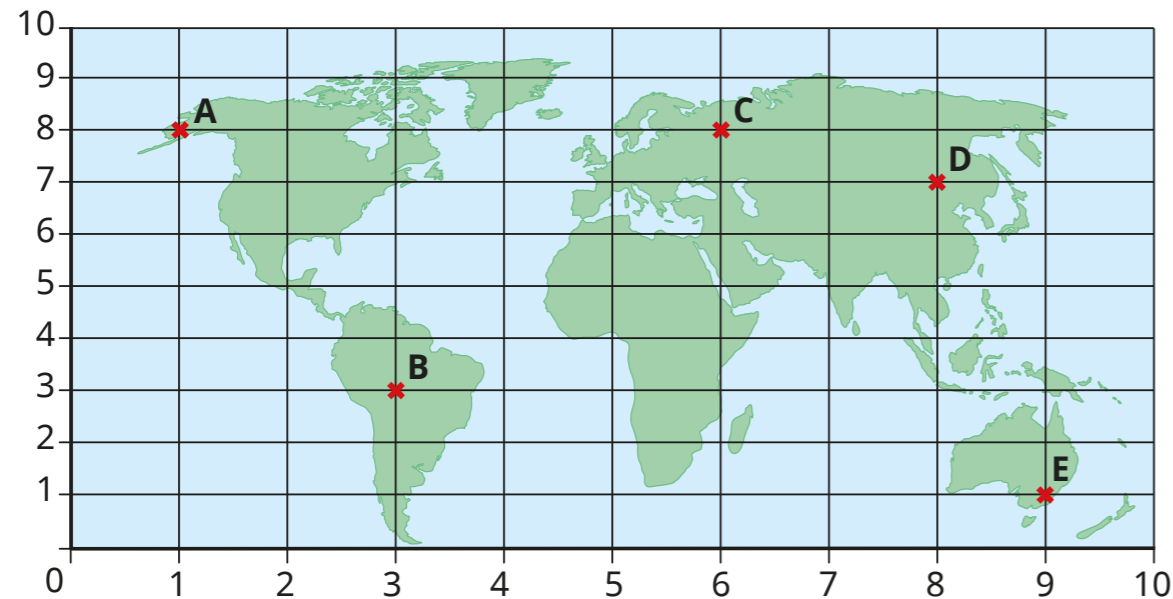


# Describe position using coordinates

- 1 A map of the world is drawn on a grid. Some locations are marked at points A to E.



Match the points to the coordinates.

A	B	C	D	E
(6, 8)	(1, 8)	(8, 7)	(9, 1)	(3, 3)

- 2 Use the words to complete the sentences.

horizontal      vertical      x      y

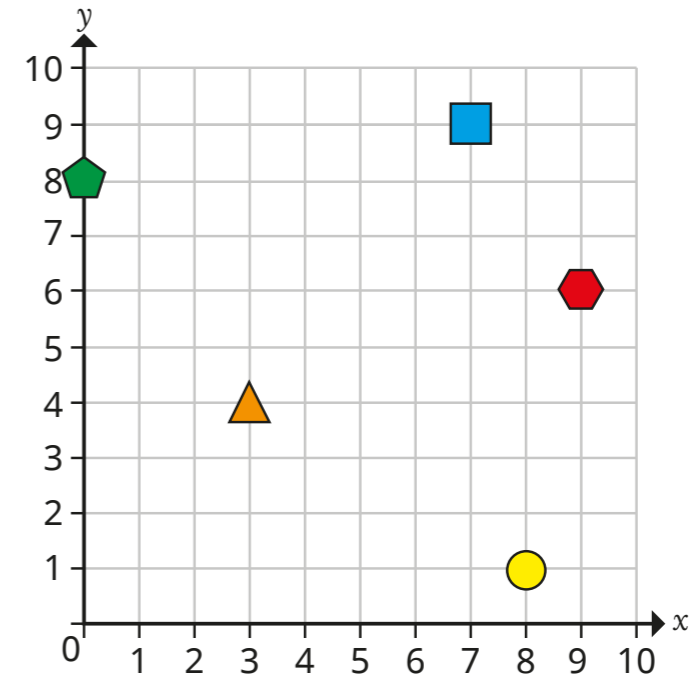
The first value in a pair of coordinates is the \_\_\_\_\_ value.

This is the value on the \_\_\_\_\_ axis.

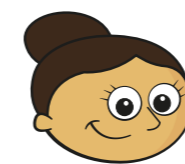
The second value in a pair of coordinates is the \_\_\_\_\_ value.

This is the value on the \_\_\_\_\_ axis.

- 3 Some shapes are drawn on a grid.

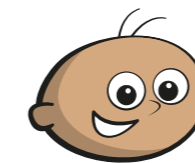


- a) Tommy, Dora and Eva are working out the coordinates of the pentagon.



Dora

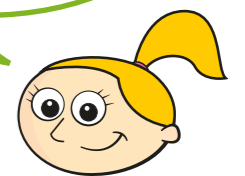
The coordinates of the pentagon are (0, 8).



Tommy

The coordinates of the pentagon are (8, 0).

I think you are both right!



Eva

Who is correct?

Talk about it with a partner.

- b) Write the coordinates of the other shapes.

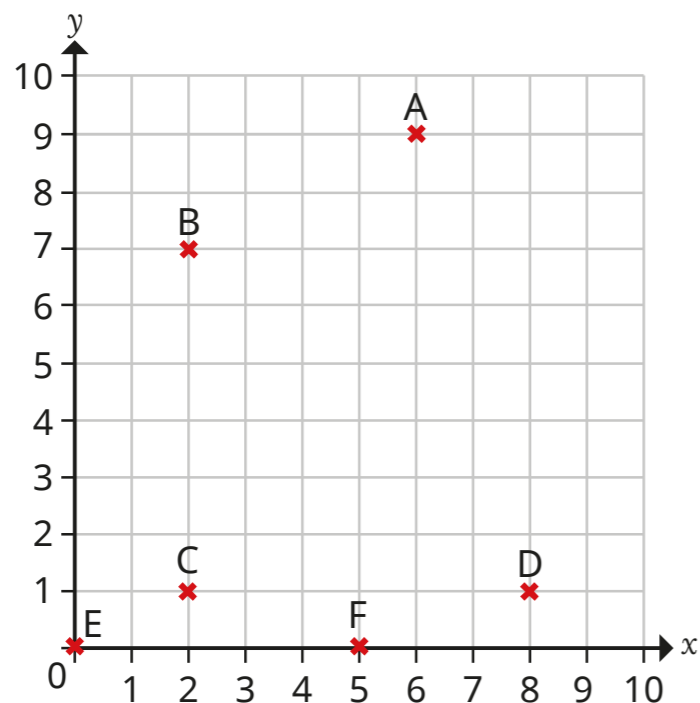
square (  ,  )

triangle (  ,  )

circle (  ,  )

hexagon (  ,  )

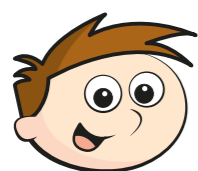
4 Six points are drawn on a grid.



a) Write the coordinates of each point.

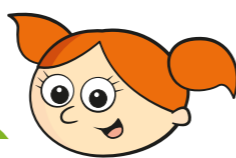
A (  ,  )    C (  ,  )    E (  ,  )  
 B (  ,  )    D (  ,  )    F (  ,  )

b) Teddy and Alex each choose one of the points that have been drawn.



Our x-coordinates are the same.

Teddy



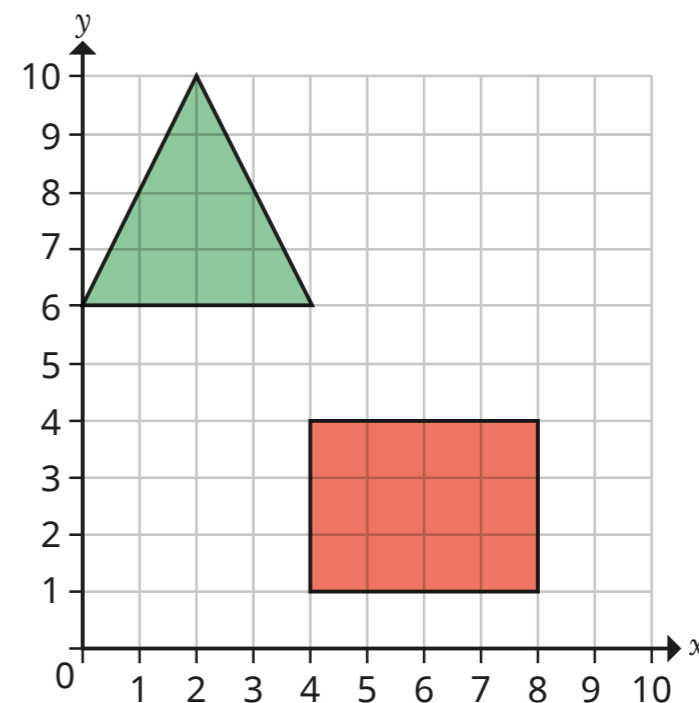
My y-coordinate is greater than Teddy's.

Alex

Write the coordinates of the points that Alex and Teddy have chosen.

Alex (  ,  )    Teddy (  ,  )

5 Two shapes are drawn on a grid.



a) Write the coordinates of the vertices of the triangle.

(  ,  )    (  ,  )    (  ,  )

b) Write the coordinates of two points inside the rectangle.

(  ,  )    (  ,  )

Compare answers with a partner.

c) Draw another shape on the grid.

Write the coordinates of your shape.

\_\_\_\_\_

\_\_\_\_\_

