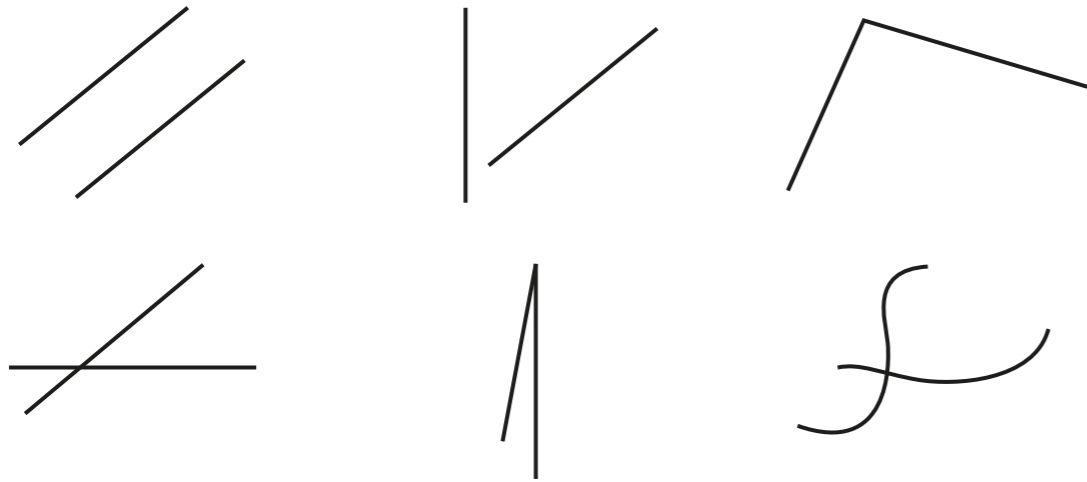


Turns and angles

1 Which pictures show at least one angle? Tick your answers.

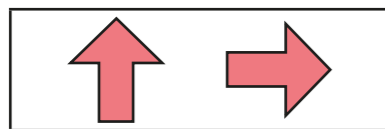


Compare answers with a partner.

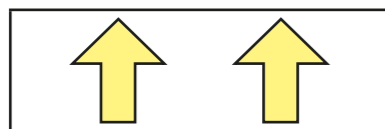


2 The arrows are being turned clockwise.

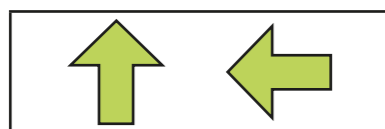
Match the pictures to the turns.



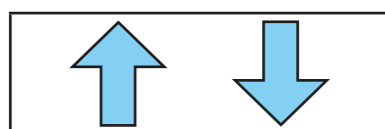
half turn



quarter turn

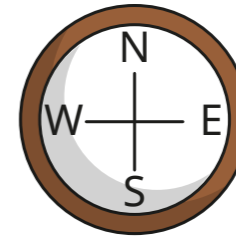


full turn



three-quarter turn

3 Here is a compass.



a) Aisha is facing north.

She turns a quarter turn clockwise.

What direction is she facing now? _____

b) Tommy is facing north.

He turns a quarter turn anticlockwise.

What direction is he facing now? _____

c) Annie is facing east.

She turns a three-quarter turn clockwise.

What direction is she facing now? _____

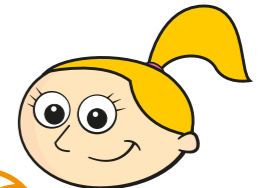
4 Mo and Eva are answering a question.

Mr Lee is facing west. He turns a half turn. What direction is he facing now?



Mo

I cannot answer this, because I do not know what direction he turns in.



Eva

It does not matter about the direction!

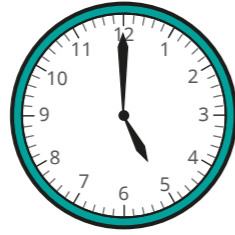
Who do you agree with? _____

Talk about it with a partner.



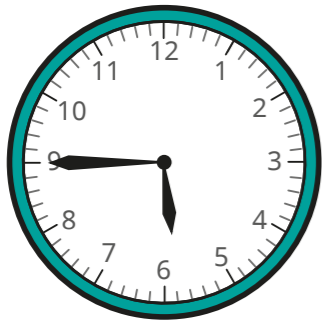
- 5 Esther and Brett are showing what time it will be in a quarter of an hour.

Here is the time now.

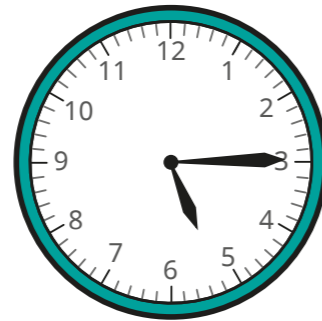


Here are their answers.

Esther



Brett

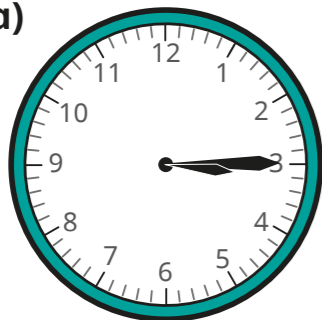


a) Who is correct? _____

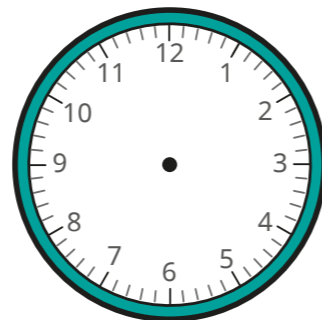
b) What turn has the minute hand made?

- 6 Draw hands on the clocks to show the new times.

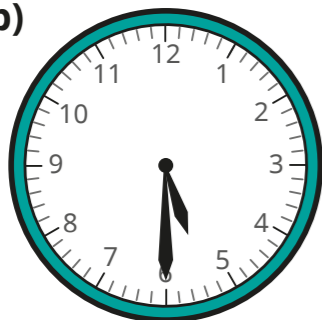
a)



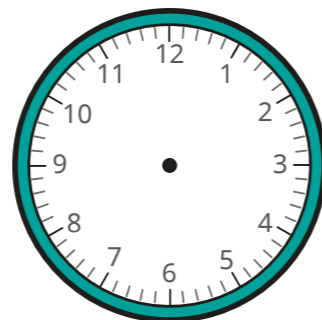
half an hour later



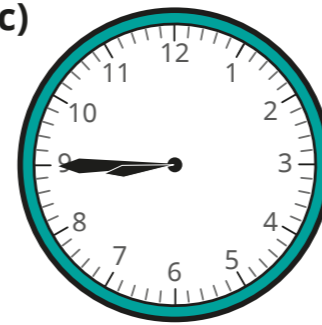
b)



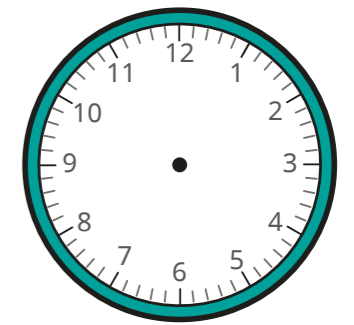
quarter of an hour later



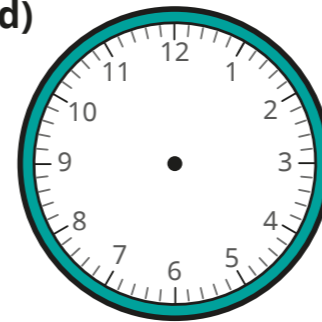
c)



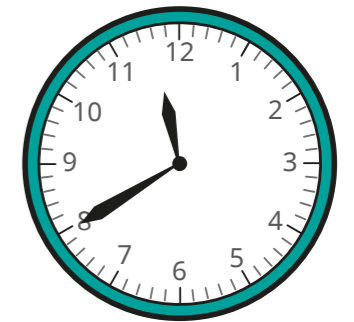
three-quarters of an hour later



d)



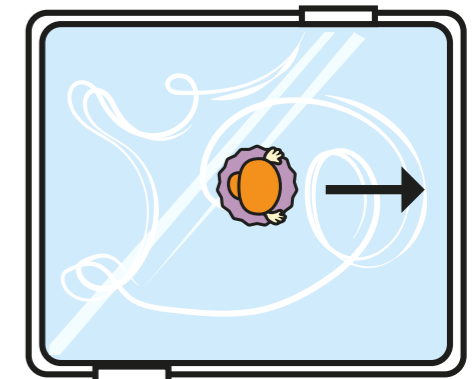
half an hour later



7

A figure skater is facing the direction shown.

She turns a quarter turn clockwise and then a three-quarter turn clockwise.



a) Draw on the picture to

show that she ends up facing the same way as she started.

b) What other turns could she make and still end up facing the same way?

Compare answers with a partner.

